

Rev:01

Date:20050823

Hybrid Stepping Motor

Type: KL34H2120-42-8A

COMMON RATINGS

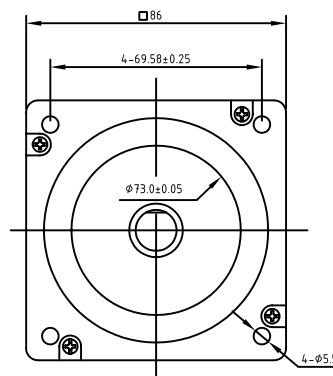
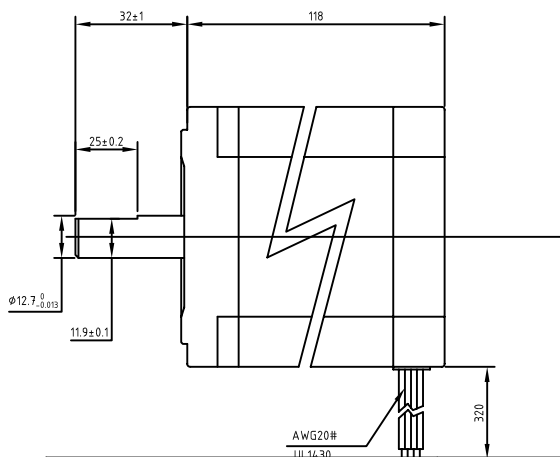
Step angle: 1.8°
 Positional accuracy: +/-5%
 Number of Phase: 4
 Temperature rise: 80°C Max
 Inertia: 3200 gcm²

Dielectric strength: 500VDC
 Insulation resistance: 100MΩ(500VDC)
 Radial play: 0.025mm max.(load 450g)
 Insulating class: B
 Weight: 4.0 kg

SPECIFICATIONS

	Holding Torque (2 phases on) N.m ±10%	Rated Current/Phase (Amps DC)	Phase Resistance (ohms) ±10%	Voltage Current/Phase (V DC)	Phase Inductance (mH) ±20% Typical (1kHz)
Unipolar	5.8	4.2	1.12	4.7	6.3
Bipoar(Series)	8.2	3.0	2.24	6.7	25.2
Bipoar(Parallel)	8.2	6.0	0.58	3.5	6.3

DIMENSIONS unit=mm



CONNECTIONS

